

TAPER PLUS HIGH SPEED ER COLLET CHUCKS

FEATURES & BENEFITS

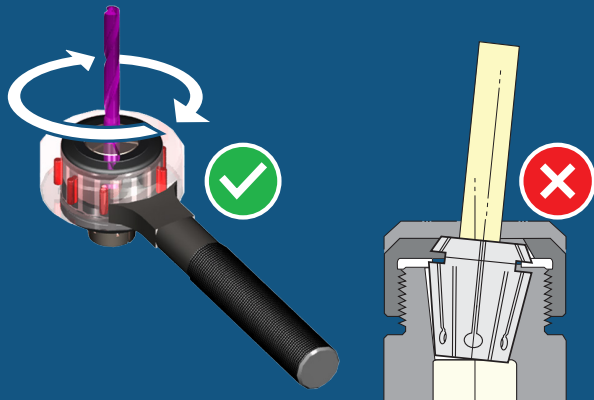
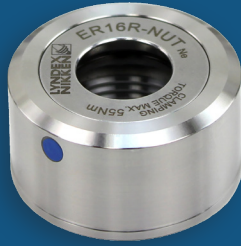
> BALANCED FOR HIGH SPEED ROTATION

> SMOOTH OUTER DIAMETER

- Eliminates coolant traps which creates mist.
- Smooth surface provides aerodynamics for Hi-RPM and eliminates harmonic vibrations.

> 360° CONTACT & CENTER ROTATION

- Distributes force evenly, eliminating collet rocking thus resulting in better TIR and collet life.



T.I.R.: ≤ 0.0001 "
run out at collet bore



SPEED: Up to
30,000 RPM

ADVANCED FEATURE FOR TAPER PLUS DUAL CONTACT ONLY

Our new Taper Plus ER Collet Chucks are designed with a Smooth Nut ideal for high speed machining. The Smooth Nuts are made without wrench flats to have better balance, maximize chip evacuation, and prevent coolant flare.

NCAT40 SERIES



PART NUMBERS

NC4007-0016-3.50G	NC4007-0025-2.50G
NC4007-0016-6.00G	NC4007-0025-4.00G
NC4007-0016-9.00G	NC4007-0025-6.00G
NC4007-0020-2.50G	NC4007-0032-3.13G
NC4007-0020-4.00G	NC4007-0032-5.00G
NC4007-0020-6.00G	NC4007-0032-9.00G
NC4007-0020-9.00G	NC4007-0040-3.13G

NCAT50 SERIES



PART NUMBERS

NC5007-0016-4.12G	NC5007-0032-4.00G
NC5007-0016-6.00G	NC5007-0032-6.00G
NC5007-0016-8.00G	NC5007-0032-8.00G
NC5007-0020-4.00G	NC5007-0032-12.00G
NC5007-0020-6.00G	NC5007-0040-4.00G
NC5007-0020-8.00G	NC5007-0040-6.00G
NC5007-0020-12.00G	NC5007-0040-8.00G
NC5007-0025-4.00G	NC5007-0040-12.00G
NC5007-0025-8.00G	

NBT30 SERIES NBT40 SERIES



PART NUMBERS

NB3007-0016-2.36G	NB4007-0020-2.50G
NB3007-0016-4.00G	NB4007-0020-4.00G
NB3007-0016-5.00G	NB4007-0020-6.00G
NB3007-0016-6.00G	NB4007-0025-2.25G
NB3007-0020-2.50G	NB4007-0025-2.50G
NB3007-0020-4.00G	NB4007-0025-4.00G
NB3007-0025-2.00G	NB4007-0025-6.00G
NB3007-0025-4.00G	NB4007-0032-3.13G
NB3007-0032-3.00G	NB4007-0032-5.00G
NB3007-0032-5.00G	NB4007-0032-6.30G

NUTS & WRENCHES

SMOOTH NUT PART NUMBER	WRENCH ATTACHMENT PART NUMBER	BODY (CHOOSE ONE)
ER16 E16-NUT-G	TQW-E16-G	 Handle: TQW-HANDLE
ER20 E20-NUT-G	TQW-E20-G	
ER25 E25-NUT-G	TQW-E25-G	
ER32 E32-NUT-G	TQW-E32-G	
ER40 E40-NUT-G	TQW-E40-G	
		 Torque Wrench: TQW-150

All wrench attachments require either a handle or wrench.



847-367-4800
www.lyndexnikken.com

Connect With Us!



1468 Armour Blvd. • Mundelein, IL 60060
sales@lyndexnikken.com